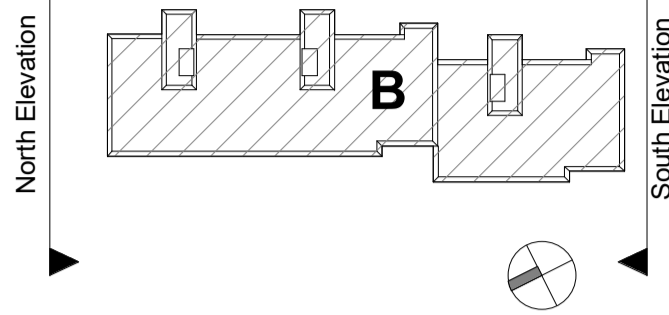


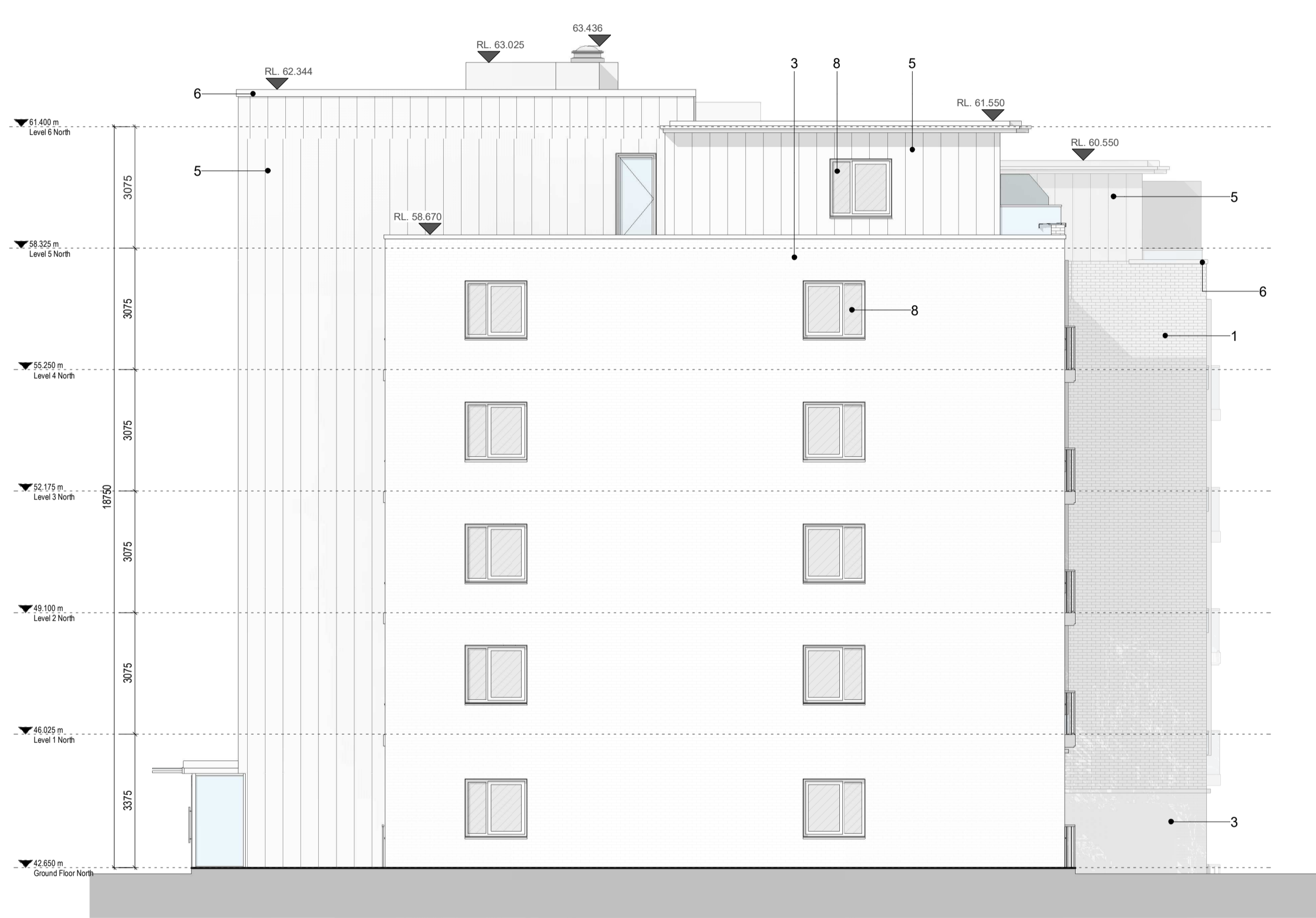
NOTES:

## DESIGN INTENT DRAWING



### Material Legend

- 1) Oatmeal Brickwork
- 2) Glazed balustrade with power-coated metal handrails
- 3) Grey Brickwork
- 4) Powder Coated Aluminium Double Glazed Curtain Wall
- 5) Zinc Standing Seam Cladding
- 6) Powder Coated Pressed Metal Coping Detail
- 7) Powder Coated Pressed Metal
- 8) Powder Coated Aluminium Double Glazed Windows
- 9) Render Finishing Off White
- 10) Selected Limestone
- 11) Obscure Back-Painted Glazing
- 12) Charcoal Brickwork



**1** GA - North Elevation  
1 : 100



**2** GA - South Elevation  
1 : 100

Rev	Description	Date	Dr by	App by
Project Stage				

# PLANNING

Client:  
Eastwise Construction Swords Limited

Project:  
Hartfield Place  
Swords Road, Whitehall, Dublin 9  
D09 C7F8

Drawing Title:  
BLOCK B - North and South Elevation GA - 472 Units

Drawn	Checked	Paper Size	Scale	Date
DP	CM	A1	1 : 100 @A1	Mar. 2022

Project No.	Drawing No.	Classification	Revision
HARTPL	022520		

File Name:  
HARTPL-CWO-BB-ZZ-DR-A-022520

Status:  
S2-Suitable For Information